

# Inventory Management Soil Enhancement Tool (IMSET)



The American family farmer has lost global market share of agricultural commodities from 73 percent in 1996 to 37 percent in the year 2020. Throughout this same period of time more native grasslands and marginal soils have been utilized to grow crops, jeopardizing soil health across the nation. As farmers experienced this loss of market share globally, American farmers have increased America's stockpile of farm commodities forcing even lower farm-gate prices, not to mention causing environmental harm to soil, air and water quality. No other industry would see this as acceptable to survive, let alone to grow into the future.

SDFU encourages the U.S. Congress, agriculture advocacy groups and checkoff organizations to support SDFU's Inventory Management Soil Enhancement Tool (IMSET).

IMSET is designed as a management tool for farmers to receive a beneficial price on his/her grain commodities for improving soil health needs of his/her farmland.

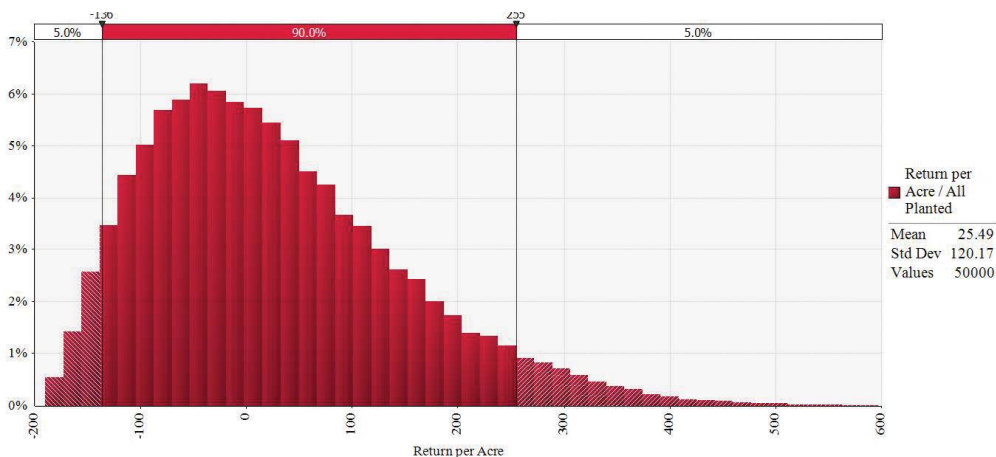
Similar to and alongside their annual renewal of revenue crop insurance, farmers can voluntarily decide to utilize the IMSET tool and renew on an annual basis.



## WHAT IS IMSET?

*IMSET is designed as a management tool for farmers to receive a beneficial price on his/her grain commodities for improving soil health needs of his/her farmland.*

### Return to Owner Labor & Management



# Example

For every 1.5 percent of crop acres enrolled to improve soil health, insured will receive 1.5 percent increase of the guaranteed revenue price coverage for that crop. Enrolled IMSET acres are planted to a soil-benefiting cover crop mix or grass.

When signing up for crop insurance, each farmer voluntarily chooses to sign up to be eligible for IMSET.

Similar to choosing a revenue crop insurance level for the upcoming crop, sign up for IMSET must be done prior to deadline date for crop insurance.

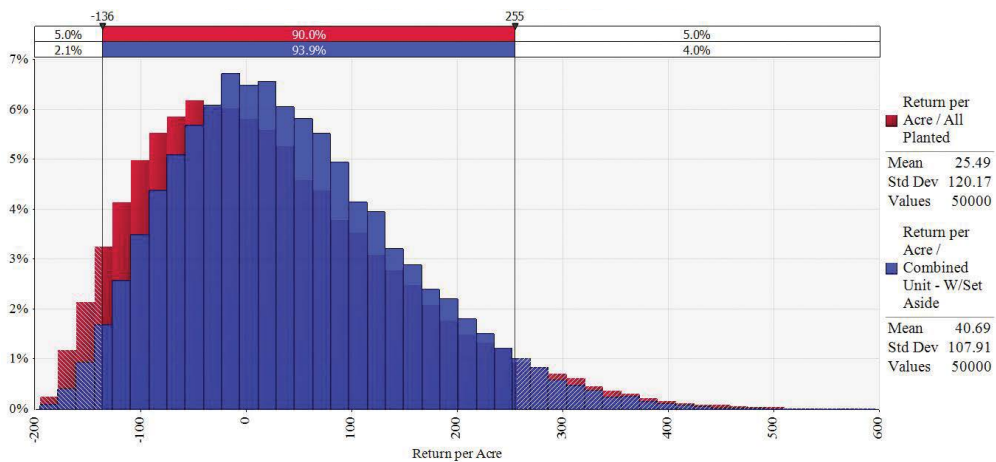
Reporting IMSET acres deadline will be simultaneous to crop insurance and FSA planted acres reporting.

IMSET acres reported determines crop revenue price guarantee of each crop they are participating in.

The level of acres allowed in IMSET will be determined by the level of farmer participation. The more participation, the lower the percentage level with a cap of no more than 10 percent per crop per year per farmer.

NRCS will certify cover crops best suited to improve soil health of IMSET acres. NRCS also assists in determining what best practices to use to improve soil health, including, but not limited to, haying or grazing of IMSET acres.

## Return to Owner Labor & Management - 1 : 1.5



## Return to Owner Labor & Management - 1 : 2.0

